

Regulator operating instructions

How to safely connect your 27mm clip on regulator.

Operating instructions to be kept by the user and read carefully before use.



CGAS snap on compact low pressure regulator

1 Connecting and operating conditions

The "snap on compact" is a domestic regulator designed to supply gas to consuming appliances at a pressure and capacity as indicated on the identification label **1**.

- The "snap on compact" can be fitted to any cylinder equipped with automatic valve having a diameter as indicated on the regulator **2**.
- The gas cylinder must always be used in the upright position.
- Whenever used outdoors, the "snap on compact" should be suitably protected against rain.
- Never use a flame to look for leakage, do it by using a soap solution.
- In case of any difficulties or problems, close the gas supply immediately and contact your dealer.
- Never move or displace the gas cylinder when it is on.

2 Fitting the hose

Before connecting the "snap on compact" to a cylinder valve, take care to fit a hose **3** to the barbed stem (lubricate the latter with water to facilitate the insertion). To guarantee a sound connection, use a hose clamp **4** which is usually sold together with the hose and is in any case matched with the hose dimensions.

3 Connecting on the cylinder

Make sure that:

- all taps of the consuming appliance are closed.
- the connecting pipe to the consuming appliance is correctly fitted.
- the "snap on compact" regulator handle is in the "off" position (**Fig.3**).

With no flame on, remove the seal cap from the automatic valve, place the "snap on compact" onto the valve and push down firmly and vertically.

You should hear a "click" sound which means the regulator is securely latched (**Fig.2**).

Note: The "snap on compact" is designed as to prevent it from being fitted to valve unless the regulator handle is in the "off" position. Therefore, never attempt to mount or dismount it when the handle is not in that position.

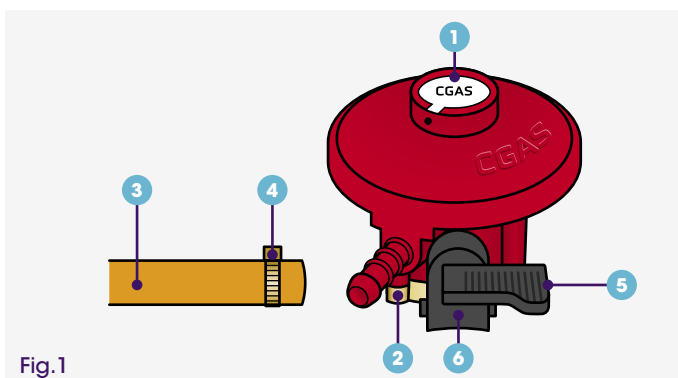
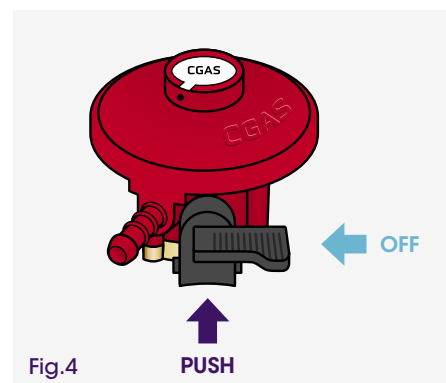
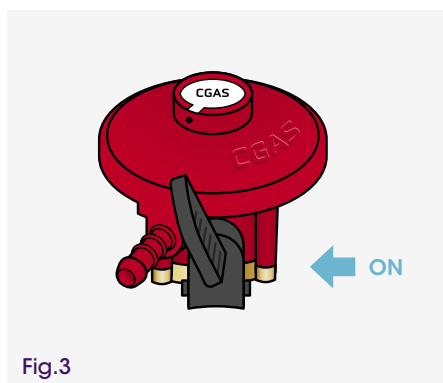
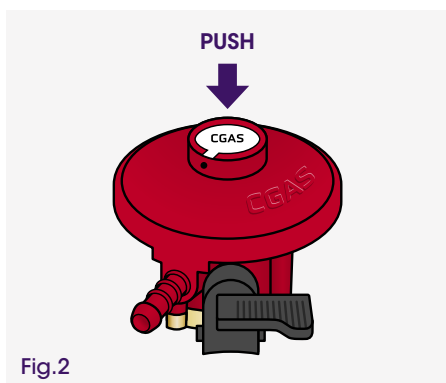


Fig.1



4 Operation

Once the "snap on compact" is correctly mounted on the valve, gas supply is possible by turning the regulator handle ⑤ upwards (counter clockwise). To shut off the gas supply reverse the procedure an arrow engraved on the handle indicates the closing direction (Fig.3).

Caution: If you are unable to turn the regulator handle to the "on" position, this means that your "snap on compact" is not correctly fitted to the valve. Do not force the handle to open and restart the operations described under 3 above.

5 Exchange of a cylinder

Make sure that:

- all taps on the gas consuming appliance are in the "off" position.
- the "snap on compact" regulator handle ⑤ is in the "off" position.

Then, dismount the "snap on compact" by pressing horizontally on the handle ⑥ and pulling upwards at the same time (Fig.4).

6 Operation of excess flow check device

The "snap on compact" regulator can be fitted with a safety device designed to automatically limit the gas flow in case of fall off or rupture of the pipe that supplies gas to the consuming appliance.

The marking "EFV" on the identification label ① means that the "snap on compact" is provided with this option.

The "excess flow device" is likely to activate under the following conditions:

Normal operating conditions:

Consumption of the gas fired appliance is higher than the regulator flow capacity. In such case, you should contact your retailer.

In the case of pipe being fall off, proceed as followings:

- Turn the "snap on compact" regulator handle to the "off" position.
- Re-fit hose correctly
- Turn the "snap on compact" regulator handle to the "on" position.
- Wait a few seconds (20 seconds) before restarting the system.

To guarantee a proper operation of the excess flow device, the pipe that supplies gas to the consuming appliance shall be no more than 2m in length.

IMPORTANT: the "snap on compact" regulator is never to be left on the cylinder without it being connected to the consuming appliance, as the tear-off proof safety is not designed to ensure the operation of the cylinder valve.

Technical data sheet

Model No	Gas type	Inlet pressure (bar)	Outlet pressure (mbar)	ΔP_2 (mbar)	Working temperature	Capacity	Inlet connection	Outlet connection
C10-30	Butane	0.3-7.5	28-30	2	0°C-50°C	1.5kg/h	G52,G53,G54	H1,H4,H50,H51,H53
C10-37	Propane	1-16	37	2	-20°C-50°C	1.5kg/h	G59	H1,H4,H50,H51,H53



Ningbo CGAS Valve Co. Ltd, No.7, Hua Chang Road, Yuyao, Zhejiang, China

Tel: +86 574 6285 6958 Fax: +86 574 6285 6966 Email: cgas@cgasvalve.com www.cgasvalve.com

Quick-on+ Fixed low pressure regulator

Type 634 – 634R

Compliant with standard EN16129

For quick connection cylinder diameter 20 (G.52) – 21 (G.53) – 22 (G.54) – 27 (G.59)

For every type of liquefied petroleum gas: Propane, Butane and LPG

This product is covered by the manufacturer's general warranty conditions section, available in the General Warranty Conditions section of the www.cavagnagroup.com website.

DANGER

- Gas leaks may cause fatal fires or explosions.
- Only skilled persons must work on gas circuits.
- Inspect the gas circuit regularly.
- Replace adapters valves and regulators as recommend by the relevant regulations.
- Failure to follow these instruction with care could lead to serious health risks.
- The manufacture reserves the right to modify this instruction sheet without notice.

THE MANUFACTURER GUARANTEES THAT THIS REGULATOR COMPLIES WITH THE REGULATIONS AND STANDARDS REFERRED TO ABOVE. IT IS THEREFORE THE INSTALLER'S RESPONSIBILITY TO COMPLY WITH THE REGULATIONS IN FORCE IN THE REGULATOR'S COUNTRY OF USE AND CHECK ANY SPECIFIC DIRECTIVES COVERING ITS APPLICATION.

FAILURE TO COMPLY WITH THE INSTRUCTIONS PROVIDED HERE LEADS TO AUTOMATIC FORFEITURE OF THE MANUFACTURER'S WARRANTY ON THE PRODUCT, AND THE MANUFACTURE SHALL NOT BE HELD RESPONSIBLE FOR ANY CONSEQUENT DAMAGE.

1 Operating instructions

The Quick-On+ is a domestic regulator used to supply gas to utilities at specific pressure and flow, as indicated on the label **1**.

- Make sure that the inlet and outlet of the regulator are correct and suitable for the cylinder valve and the application.
- The gas cylinder must always be kept in the upright position. Do not move the cylinder during the operation. When the device is used outdoors, it shall be positioned or protected against direct penetration by any tracking water.
- The Quick-On+ versions featuring a release valve (the marking "PRV" is visible on the label **1** and are generally not type-approved for use in closed premises (see local laws on the subject).
- Quick-On+ operating temperature range is 0/+50°C for Butane and -20/+50°C for Propane and LPG.
- Never look for gas leaks with a live flame. Use instead a solution of water and soap.
- In the event of any faults being found, close the Quick-On+ knob and immediately contact your gas supplier.
- Avoid that the hole on the cover (VENT) is obstructed or stopped **6**.

- This regulator cannot be used on caravans and motor homes.
- For permanent use outside the house, install the regulator in a position protected from the weather, paying great attention to the position of the vent hole **6**.

Until time of installation, the product must be stored in a clean, dry location protected from weather, atmospheric agents and direct sunlight. It must not be knocked or dented in anyway.

Before installation, inspect the product for damage and dirt. Damaged products must not be installed.

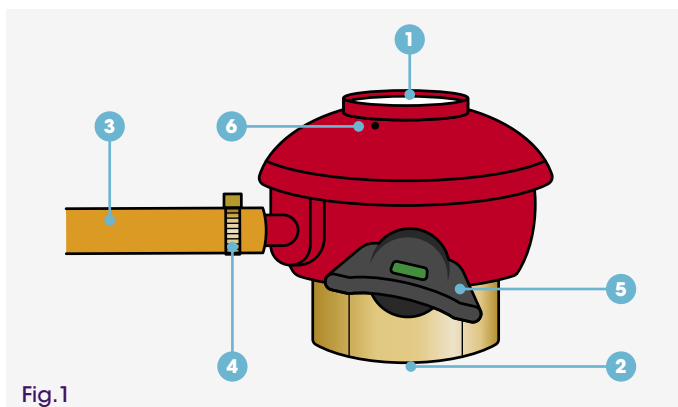


Fig.1

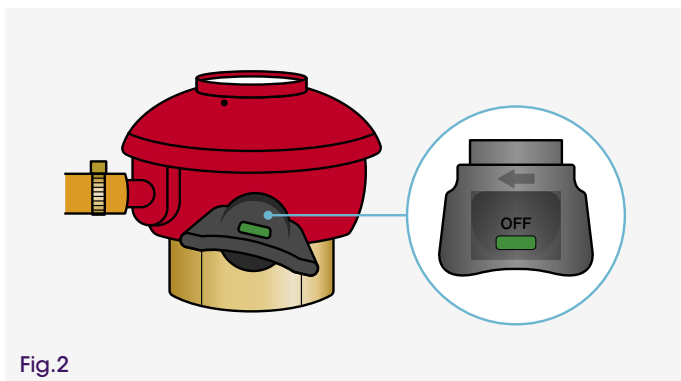


Fig.2

2 Fitting the rubber hose (Fig. 1)

Connect the end of the hose **3** to the regulator outlet, if necessary with the aid of soapy water. Fasten the hose using clamps **4**. Do not over-tighten to prevent damaging the hose (in some countries, the hose clamps and the hose are of standard dimensions).

3 Assembling the gas cylinder

Make sure that:

- All taps of the gas consuming appliance are close.
- The connecting pipe is correctly fitted to the consuming appliance.
- The handle is in the 'closed' position (the regulator is OFF when a green rectangle is visible on the handle (Fig. 2).

CAUTION: with no flames on, remove seal cap from the automatic valve, place the Quick-On+ onto the valve and push down firmly and vertically. You should be able to hear a click sound, which means the regulator is securely fitted to the gas bottle.

NOTE: The Quick-On+ is designed so as to be fitted to the valve, if only its handle is in the "OFF" position.

CAUTION: Never try to attach or remove the regulator from the cylinder valve unless the regulator handle is in the "OFF" position.

4 Operation

OPEN (ON): After fitting the regulator correctly onto the valve, gas flow can be opened by turning the knob an anticlockwise half turn till the stop and to find the

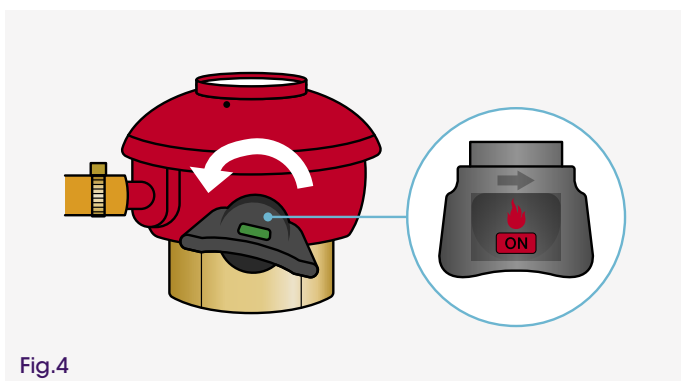


Fig.4

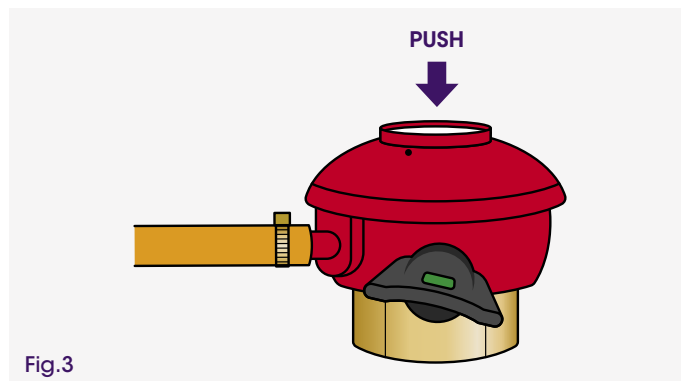


Fig.3

horizontal ON position. In ON position a red flame and the marking "ON" is visible (Fig. 4).

In this position the valve is open and the gas can flow.

CLOSED (OFF): The gas flow can be stopped by turning the knob a clockwise half turn until the stop and to reach the opposite horizontal OFF position. In OFF position the valve is closed. No gas is flowing.

CAUTION: if you are unable to turn the regulator to "ON" position, your Quick-On+ is not correctly connected to the valve. Do not force the handle, but restart following operations described at above mentioned point 3.

5 Replacement of a cylinder

Make sure that:

- All taps on the gas consuming appliance are in the OFF position.
- The Quick-On+ handle **5** is in the OFF position (it closes by turning it a clockwise half turn until the stop: red flame on the handle **5** and pulling upwards at the same time (Fig. 5).

IMPORTANT: Do not remove gas cylinder during this operation.

NOTE - IMPORTANT SECURITY FEATURE: It is not possible to press the handle, if the knob is not in complete horizontal position and the marking "OFF" is not visible. Please contact your gas supplier in case of any problems.

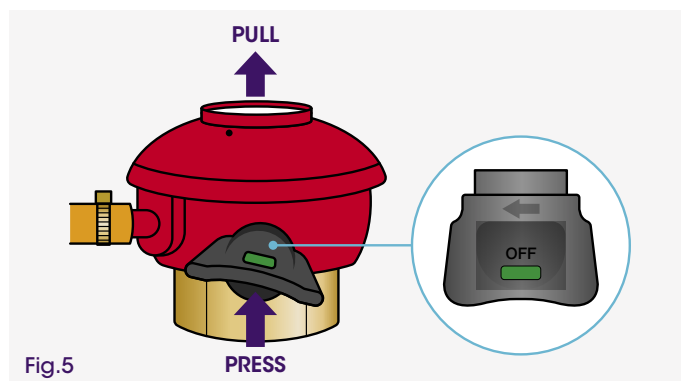


Fig.5

6 Gas leaks

All gas leaks, however small, are dangerous and must be eliminated. Escaping gas can normally be traced by smell or sound but liquid detergent should be brushed over the area to confirm the location of the leak. NEVER look for a leak with a naked flame.

On cylinders, if a leak is suspected, turn off gas supply immediately, and extinguish any standing pilot lights or naked flames. Ventilate the room if possible. If the cylinder is indoors, move the cylinder outdoors to a safe place, and call your dealer for advice.

7 Excess flow valve (EFV)

The Quick-On+ can be equipped with a safety device "excess flow valve" designed to stop gas escaping in case of accidental detachment or breakage of the rubber hose used to supply the gas to the user appliance. The marking "EFV" on the label ❶ shows the presence of this device on the Quick-On+.

The flow limiting device should operate as follows:

- In the event of the hose moving from its correct position:**
 - Close the Quick-On+ knob.
 - Fit the hose correctly back on the regulator hose connection.
 - Open the Quick-On+ knob.
 - Wait at least 20 seconds before opening the knob again.
- In case the flow of gas being higher than the capacity of the regulator, contact your gas supplier.**

Maximum residential flow: 60g/h

NOTE: The excess flow valve may close if the cylinder is moved during use.

To ensure correct operation of the flow limiting device during gas supply, the hose length should be 1.5m at maximum.

8 Thermal shut off system (TSP)

The Quick-On+ can be equipped with a safety device "thermal shut off system" designed to permanently close the self closing cylinder valve above a certain temperature limit. The marking "TSP" (thermal spindle protection) on the label ❶ shows the presence of this device on the Quick-On+.

The thermal spindle deforms or melts when the target temperature is reached, resulting in the gas flow shutting off. When the device is under the influence of the temperature, the thermal spindle shall act and shut off the gas flow at a temperature between 100°C and 150°C.

In normal conditions of use, in order to ensure the correct operation of the installation, it is recommended that this regulator is changed within 10 years of the date of manufacture.

IMPORTANT: Never leave the regulator connected to the cylinder valve when the rubber hose is not correctly fitted to its housing as the flow limiting device has not been designed to guarantee the gas supply shut off function.

This product must never be tampered with or dismantled; any such procedures lead to forfeiture of warranty cover on the product and the manufacturer declines all consequent responsibility.

9 Recommendations for the final customer

Gas leaks may cause fires and explosions.

If a smell of gas is noticed:

- Do not use electrical devices or the telephone.
- Do not switch on household appliances.
- Call your supplier from a neighbour's telephone at once.
- If you are unable to contact your supplier, call the fire service.

Technical information

Input pressure (p)	Outlet pressure (pd)	Guaranteed output (Mg)	Outlet connections	Type of gas	Diaphragm type
Propane: 1-16 bar Butane: 0.3-7 bar LPG: 0.3-16 bar	Propane: 29 mbar Butane: 37 mbar LPG: 50 mbar (written on the label)	Propane: 1 kg/h Butane: 1.5 kg/h LPG: 2 kg/h (written on the label)	Propane: H.4 Butane: H.50 LPG: H.53 of EN16129	Propane, Butane and LPG. (written on the label)	Standard for type 634 – reinforced for type 634R

NOTE: The marking of DP2 or DP5 marked on the label ❶ is the value of maximum downstream admissible pressure loss downstream and shall not be exceeded.